

Radiation Safety Accessories

for Storage and Working Areas



Radiation safety accessories to meet your everyday needs

Bartec Technologies are proud to provide a range of shielding, transport and storage containers, imaging aids and dose calibrators, which comply to the most rigorous radiation safety guidelines.

Sourced from leading companies, these products have been selected for their quality and durability, providing the user with the best choice of radiation safety accessories on the market.

SPECT Shields	3
PET Shields	4
Beta Syringe Protection	6
Vial Shields	7 - 8
Vial Tongs	9
Syringe Transport	10
Waste Containers	11 - 14
Imaging Aids	15 - 16
Dose Calibrators	17 - 18
Decontamination	19

Lead Glass Syringe Shield



The Hoy Scandinavian Lead Glass Syringe Shield is designed to offer the best mix of personal protection and a high functionality, whilst providing the perfect fit for the syringe. They are most suitable for nuclear medicine imaging departments

Available with two different types of locks: Spring Lock and Twist Lock.

Spring Lock – encloses the syringe by pushing a button to release a small raised point that attaches the syringe into the sleeve.

Twist Lock – encloses the syringe by twisting the syringe into the two flanges that attaches the syringe into the sleeve.

The Lead Glass Syringe Shield is designed for all types of syringes and for the following sizes: 1 ml, 2 ml, 2.5 ml, 3 ml, 5 ml, 10 ml, 30 ml and 50 ml.

- Lead Glass High Density: 5.2 g/cm³
- Thickness: 5.5 mm

Tungsten Syringe Shield



Suitable for use in both nuclear medicine imaging and radiopharmacy, the Hoy Scandinavian Tungsten Syringe Shield has a window to provide the user the possibility of seeing the syringe inside the shielding.

Available with two different types of locks: Spring Lock and Twist Lock.

Spring Lock – encloses the syringe by pushing a button to release a small raised point that attaches the syringe into the sleeve.

Twist Lock – encloses the syringe by twisting the syringe into the two flanges that attaches the syringe into the sleeve.

The Tungsten Syringe Shield is designed for all types of syringes and for the following sizes: 1 ml, 2 ml, 2.5 ml, 3 ml, 5 ml and 10 ml.

- Tungsten Shielding: 2.5 mm

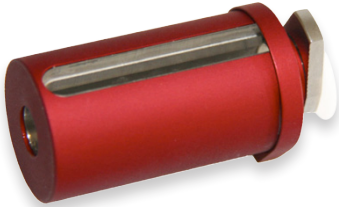
Magnetic Sliding Syringe Shield



The Hoy Scandinavian Magnetic Sliding Syringe Shield is separated by simply pushing the sides apart, and closed with strong magnets. This means that it is now possible to use safety glide needles together with Hoy syringe shielding.

Available in a range of size options for various syringe types. For other types of syringes please contact our office.

PET Syringe Shield



The Hoy Scandinavian PET Syringe Shield provides the user with optimal radiation shielding during PET / MR or PET / CT procedures.

Magnetic / non-magnetic with two different types of locks: Spring Lock and Twist Lock.

Spring Lock – encloses the syringe by pushing a button to release a small raised point that attaches the syringe into the sleeve.

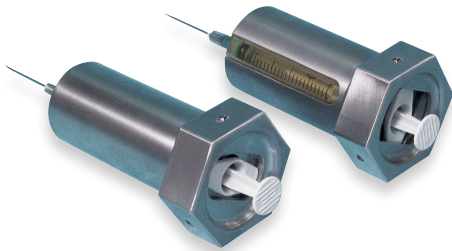
Twist Lock – encloses the syringe by twisting the syringe into the two flanges that attaches the syringe into the sleeve.

Available for the following syringe sizes: 1 ml, 3 ml, 5 ml, and 10 ml.

- Shielding: 10 mm tungsten.
- Weight: 750 g (1 ml)

Order Code	Product
11.004.01	PET Syringe Shield

Gaard Lock™ PET Syringe Shield



The Gaard Lock™ PET Syringe Shield reduces hand exposure from syringes containing 511 keV radionuclides FDG F-18.

- Barrel of the shield is constructed of 9 mm thick tungsten that attenuates FDG F-18 by 88%.
- Syringe shield is offered with or without a high density (5.6) flush mounted lead glass window that provides protection and visibility.
- Syringe shield features a unique flanged locking mechanism that speeds the loading and unloading of the syringe, further reducing hand exposure.
- Accommodates the standard sized 3 ml, 5 ml and 10 ml syringes.

Z-PET Syringe Shield



The Z-PET Syringe Shield greatly reduces hand exposure from syringes containing 511 keV radionuclides.

- Barrel of the shield is constructed of 14 mm thick tungsten that attenuates FDG F-18 by 97%.
- Shield accommodates standard 5 ml syringes.
- Easily sanitised with alcohol wipes.

Order Code	Product
007-945	Z-PET Syringe Shield

Pro-Tec™ PET / MR Syringe Shield



This non-magnetic, Pro-Tec PET/MR Syringe Shield reduces hand exposure from syringes containing 511 keV radionuclides.

- Barrel of the shield is constructed of 8.5 mm thick tungsten which attenuates FDG F-18 by 88%.
- Shield is clearly labeled and engraved as MR safe to avoid confusion.
- Accommodates the standard sized 3 ml and 5 ml syringes.

Order Code	Product
007-961	Pro-Tec™ PET/MR Syringe Shield, 3 cc
007-962	Pro-Tec™ PET/MR Syringe Shield, 5 cc

Beta Syringe Protection

Biodex Beta Shield



This Beta Syringe Shield reduces hand exposure from syringes containing Strontium 89, P-32, and other beta-emitting radiopharmaceuticals.

The barrel of the syringe shield is constructed of clear plastic with a 1.57 mm thick embedded lead lining, which attenuates Beta emission and errant bremsstrahlung. The lead lining is interrupted at the viewing window for clear visibility when drawing and administering the dose.

A thumbscrew holds syringes firmly in place.

- Lead and plastic shielding, designed for Beta.
- Clear plastic window.
- Fits most disposable syringes.
- Suitable for Ra-223 Xofigo®
- Ideal for Zevalin Y-90.
- Easily sanitised with alcohol wipes.

Order Code	Product
007-956	Beta Syringe Shield, 1 cc
007-957	Beta Syringe Shield, 10 cc

Hoy Acrylic Shield



Protective BETA Shielding from Hoy Scandinavian provides the user with optimal radiation shielding within all work phases with the use of acrylic.

Accommodates 1, 2, 5 and 10 ml BD, Braun and Once Syringes, a secondary product number will also accommodate Luer-Lock and BD Plastipak Syringes.

- Thickness: 10 mm.

Order Code	Product
40.001.01	Acrylic Syringe Shield

Syringe Shield Accessories

Syringe Shield Holder



The Syringe Shield Holder offers a means of protecting syringe shields from scratches or misplacement while freeing up extra work space.

The Syringe Shield Holder will support up to eight shields and is counterbalanced to prevent tipping.

- Dimensions: 19 (W) x 10.2 (D) x 15.2 (H) cm
- Weight: 2.3 kg

Order Code	Product
007-999	Syringe Shield Holder

Shielded Syringe Tray



The Shielded Syringe Tray offers extra protection for syringe doses awaiting patient injection. It is stackable and holds 6 syringes at one time.

- Dimensions: 250 (W) x 250 (L) x 75 (H) mm
- Weight: 5 kg
- Shielding: 3 mm Pb

Order Code	Product
10.500.00	Shielded Syringe Tray

Low Activity Lead Glass Vial Shield



The Low Activity Lead Glass Vial Shield protects the user from hand and eye exposure, when inspecting vials before aspiration.

- Developed for low activity whilst offering complete 360° visibility at all times.
- Vial glass is shielded for low-energy isotopes.
- Tungsten components within the vial shield allow for the small physical dimensions and light weight.
- Designed to give the optimum balance of protection and visibility, these Low Activity Glass Vial Shields are easy to use and offer ample protection from lower energy isotopes.
- Quick-release magnetic top allows needle access to the vial septum, vials are changed using a secure screw-top.
- Shields accommodate most vials using a selection of plastic inserts (included).
- Available in 4 and 6.4 mm Pb equivalent.
- Accommodates vials from 5 to 30 ml.
- Standard colours: Red, Aluminium (other colours available at extra cost).
- Lead glass (thickness 12.5 mm) equivalent to 4 mm Pb.
- Outer dimensions: 60 (dia.) x 90 (H) mm.
- Inner dimensions: 30 (dia.) x 61 (H) mm.
- Standard hole: 5 (dia.) mm
- Sleeve: 5 x 13 mm on demand.
- Weight: 1033 g

Order Code	Product
10.001.01-06	Low Energy Lead Glass Vial Shield

High/Medium Activity Lead Glass Vial Shield



The High/Medium Activity Lead Glass Vial Shield protects the user from hand and eye exposure, when inspecting vials before aspiration.

- The lead glass has a unique magnetic lift-off top for needle injection.
- Enclosed vial adapters ensure that the vial is always correctly positioned and aligned.
- Lead glass (thickness 20 mm) equivalent to 6.4 mm Pb.
- Outer dimensions: 75 (dia.) x 90 (H) mm.
- Inner dimensions: 31 (dia.) x 60 (H) mm.
- Standard hole: 5 (dia.) mm
- Sleeve: 5 x 13 mm on demand.
- Weight: 1600 g

Order Code	Product
10.002.01-04	High/Medium Activity Lead Glass Vial Shield

Tungsten Vial Shield



Designed to reduce exposure when handling vials containing liquid radioisotopes, the tungsten vial shield features a removable screw top with a magnetic cap to facilitate quick and easy access.

- Constructed with 5 mm thick tungsten.
- Vial shield accommodates most 10 ml vials.
- > 99% attenuation for Tc99m.
- Weight: 0.8 kg

Order Code	Product
053-806	Tungsten Vial Shield

Beta Vial Shield



The Hoy Scandinavian Beta Vial Shield provides the user with optimal radiation shielding within all work phases with the use of acrylic and lead glass.

- Lead Glass Thickness: 26 mm equal to 8 mm Pb.
- Outer Dimensions: 94 (dia.) x 120 (H) mm
- Inner Dimensions: 37 (dia.) x 72 (H) mm
- Weight: 2.9 kg

Order Code	Product
10.003.01	Beta Vial Shield
90.004.01	Acrylic Shield for Zevalin Y-90, Small
90.004.04	Acrylic Shield for Zevalin Y-90, Large



Eluat Vial Shield

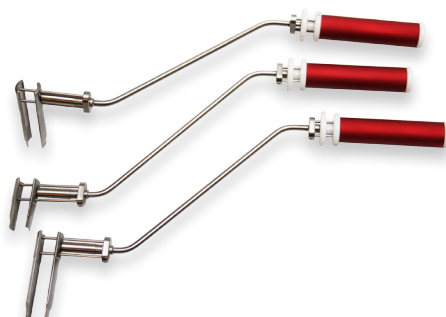


Designed for Mallinckrodt and GE vials.

- Lead Glass Thickness: 26 mm equal to 8 mm Pb.
- Outer Dimensions: 86 (dia.) x 155 (H) mm
- Inner Dimensions: 50.7 (dia.) x 115.4 (H) mm
- Weight: 3.5 kg

Order Code	Product
10.006.01	Eluat Vial Shield

Angled Tongs

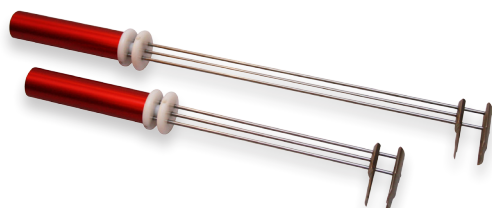


Hoy Scandinavian Tongs are available in different lengths, angles and with different claw types.

The two claws provide an excellent grip of the vial. These are operated by pushing the white disc against the handle to open the claws. The spring locking mechanism then automatically holds the vial until the white disc is pushed back again.

Order Code	Product
10.604.01	Angled Tongs with short claws (right hand)
10.604.02	Angled Tongs with long claws (right hand)
10.605.01	Angled Tongs with short claws (left hand)
10.605.02	Angled Tongs with long claws (left hand)
10.603.01	Standard Angled Tongs with short claws
10.603.02	Standard Angled Tongs with long claws

Straight Tongs



Straight Tongs are produced with either short claws (30 mm) or long claws (60 mm).

Order Code	Product
10.601.01	Straight Tongs with short claws (16 cm from handle to the claw)
10.601.02	Straight Tongs with long claws (16 cm from handle to the claw)
10.601.03	Straight Tongs with short claws (26.5 cm from handle to the claw)
10.601.04	Straight Tongs with long claws (26.5 cm from handle to the claw)
10.606.01	Straight Tongs for 100 ml vials
10.607.01	Straight Tongs for 1.5 ml vials

Stabilised Vial Tongs



The Stabilised Vial Tongs feature a single axis gimbal to stabilise the vial. This ensures a stabilised vial throughout any motion. The gimbal will stop the vial from tilting, even when the tongs are tilted.

Ideal for use with Hoy Scandinavian glass vials; the tongs are easier to align with the slot in the vial glass enabling simple and easy insertion.

These tongs currently only accommodate 10 ml vials, however other volumes can be supported on request.

- Length of handle: 125 mm
- Length from handle to claw: 260 mm
- Length of claw: 70 mm
- Total length: 405 mm

Order Code	Product
10.608.01	Stabilised Vial Tongs

Syringe Carriers

Standard Shielded Syringe Carrier

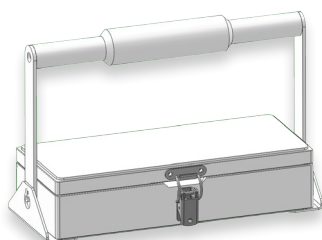


Shielded Syringe Carriers reduce exposure while storing or transporting radioactive material.

- The overlapping lid design with snap-latch closure prevents streaming.
- Available in two sizes and thickness of lead.
- The ends of the carriers are double thick to reduce the exposure from the ends of syringes.

Order Code	Product
001-181	Shielded Syringe Carrier, Small
001-179	Shielded Syringe Carrier, Large

Cleanroom-friendly Syringe Carrier



The centre compartment of this syringe carrier is machined from aluminium with no seams or joins, making it ideal for infection control.

- Lay flat carrying handle has an interface to the main box preventing the box from tilting when carried.
- Catch fitted to the lid preventing inadvertent opening.

Order Code	Product
SSC101	Syringe Carrier

PET Syringe Transport Container (MR Safe)



This non-magnetic syringe container features a removable tray inside.

- Outer Dimensions: 127 x 297 x 190 mm
- Tray Dimensions: 60 x 200 x 40 mm
- Weight: 40 kg
- Shielding: 30 mm Pb

Order Code	Product
105.001.501	Syringe Transport Container

Compatible syringe transport trolley.

- Stainless steel frame with coloured coating.
- Removable wheels proved an easy transition to a sterile environment.
- Laptop table.
- Adjustable tray.
- Waste bin.
- Dimensions: 910 (H) x 500 (W) x 650 (D) mm

Order Code	Product
105.000.100	Transport Trolley

Small Waste Container



The small waste container has 3 mm lead shielding, or 15 mm for FDG.

- Outer Diameter 130 mm
- Inner Diameter: 106 mm max.
- Height: To customer's specification.
- Weight 4 - 6 kg

Order Code	Product
10.800.01	Small Waste Container

Medium Waste Container



The medium waste container has 3 mm lead shielding, or 15 mm for FDG.

- Outer Diameter 180 mm
- Inner Diameter: 147 mm max.
- Height: To customer's specification.
- Weight 6 - 8 kg

Order Code	Product
10.800.02	Medium Waste Container

Large Waste Container



The large waste container has 3 mm lead shielding, or 15 mm for FDG.

- Outer Diameter 260 mm
- Inner Diameter: 235 mm max.
- Height: To customer's specification.
- Weight 8 - 10 kg

Order Code	Product
10.800.04	Large Waste Container

Square Waste Containers



The square waste containers are made to suit individual measurements, so they fit the yellow bins exactly. They are constructed with 3 mm lead shielding, or 15 mm for FDG.

For exact dimensions and prices, please contact us and let us know the brand, length and diameter of your bin.

Small Pedal Waste Container



A shielded waste enclosure with 3 mm lead lining and pedal operated lid, the Pedal Waste Container is designed to be fitted with a disposable bin bag.

- Outer diameter: 260 mm
- Inner diameter: 230 mm
- Height: 410 mm
- Weight: 21 kg

Order Code	Product
10.800.05	Pedal Waste Container

I-131 Waste Container



A PET waste container with 15 mm lead shielding.

- Outer diameter: 180 mm
- Inner diameter: 110 mm
- Height: 230 mm
- Weight: 21 kg

Order Code	Product
11.003.01	PET/I-131 Waste Container

Floor Standing Waste Container

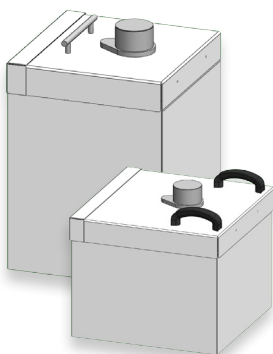


Designed to accommodate a large bag the Floor Standing Waste Container features a sliding lid to alleviate manual handling issues. It is available with 3 mm lead shielding, or 15 mm for FDG.

- Outer diameter: 305 mm
- Inner diameter: 250 mm
- Height: 600 mm
- Weight: 80 - 120 kg
- Brushed stainless steel.

Order Code	Product
101.080.006	Floor Standing Waste Container

Size-customisable Sharps Enclosures

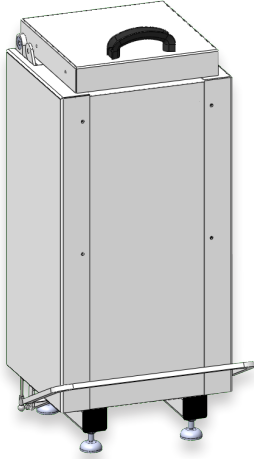


Made in the UK and designed to accept the SharpSafe and Daniels sharps bins these fully customisable enclosures offer a sliding aperture shield, pivot lid / sliding lid, lockable hasp, and swing arm.

- Powder coated stainless steel.
- Maximum lead thickness: 30 mm

Contact us about your requirements.

Pedal Waste Bin

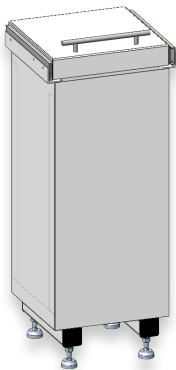


A shielded bin enclosure with lead lining and pedal operated lid, the Pedal Waste Bin is designed to be fitted with a disposable bin bag and the enclosure is self supporting on four adjustable feet.

- Powder Coated / Stainless Steel.
- Size determined by customer's specification.
- Lead shielding from 5 to 30 mm

Contact us about your requirements.

Slide Waste Bin

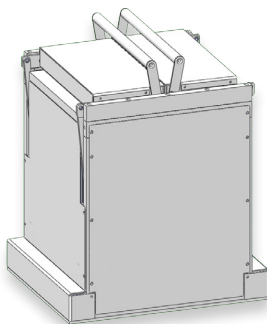


The Slide Waste Bin is designed to be fitted with a disposable bin bag and the enclosure is self supporting on four adjustable feet.

- Powder Coated / Aluminium.
- Size determined by customer's specification.
- Lead shielding from 5 to 30 mm

Contact us about your requirements.

Cantilever Bin



The Cantilever Bin is designed specifically for high-energy isotopes that require the highest levels of shielding.

Capable of housing eight 4 ltr SharpSafe sharps bins the Cantilever Bin allows for consolidation of waste for economic decay storage and ultimate disposal. The Cantilevered design allows 50 mm of lead on the lid to be opened with the lightest of touches.

- Powder Coated / Aluminium.
- Size determined by customer's specification.

Contact us about your requirements.

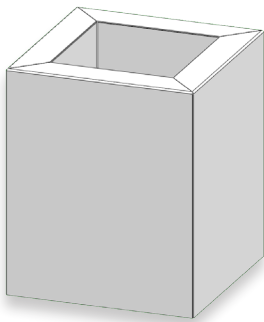
Waste Bottle Container



A lead shielded container constructed from stainless steel to house a 1 ltr waste bottle.

- Powder Coated / Stainless Steel
- Outer Dimensions: 168 (dia.) x 308 (H) mm
- Inner Dimensions: 97.6 (dia.) x 237 (H) mm
- Weight: 53 kg
- Maximum Lead Thickness: 50 mm

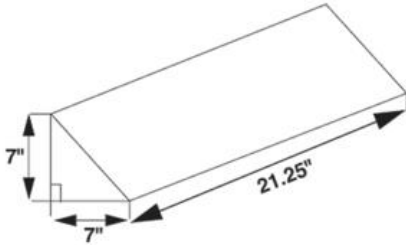
Waste Store



Featuring lead shielding on four sides, this waste store can be mounted within a secondary cabinet.

- Powder Coated / Stainless Steel
- Maximum Lead Thickness: 30 mm

Positioning Wedges

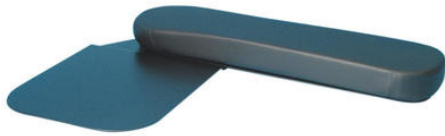


Designed to position extremities, these positioning wedges can accommodate almost every conceivable position needed, including skulls, hips and spines.

- Constructed of fine-cell charcoal grey polyurethane foam, the positioning wedge includes a vinyl cover.
- The cover has a smooth surface that is easy to clean without the crevices from stitched seams.

Order Code	Product
120-265	Positioning Wedges

Arm Support Board



Carbon Fiber Arm Boards are completely radiolucent with no metal parts to obscure the image. They are the perfect accessory for studies when 'chasing the bolus' from the injection site is required.

- The body of the arm board slides under the table mattress and is held in place by the weight of the patient.
- Both single and double sided arm boards are available.

Order Code	Product
056-865	Arm Support Board 1.4 kg
056-866	Arm Support Board 1-8 kg

Arm Support



The Arm Support is a proven design that provides anatomical comfort with correct arm and shoulder support.

- Accommodates single or dual head imaging systems.

Order Code	Product
056-791	Arm Support

Arm Support Strap



The Arm Support Strap is a comfortable nylon with fastening straps that wrap around both the table and the patient. Its construction offers no attenuation to the image.

Wide enough to comfortably support the weight, the strap measures 30.4 cm wide and comes in an easy to clean royal blue.

- Reduces patient fatigue.
- Holds patients still during long procedures.
- Dimensions: 180 (L) x 30.4 cm (W)

Order Code	Product
056-786	Arm Support Strap

SPECT Arm Boards



SPECT Arm Boards are designed to fit on all SPECT tables. They are positioned under the patient while lying on the table to effectively widen the surface. The patient's arms can then be held comfortably next to the body while imaging the head.

The amount of overhang on the side of the table is adjusted by sliding the arm board further under the patient or pulling them further out for a wider surface. The arm boards have been built with a convenient bend in them to aid in patient comfort and positioning.

- Enhanced patient comfort.
- Stable arm support.
- Dimensions: 50.8 (l) x .6 cm (thick), Width: Tapered 34.9 to 27.3 cm
- Construction: Plexiglas
- Weight: 2 kg

Order Code	Product
056-767	SPECT Arm Boards

Table Pad



Ideal for patient positioning, the non-stick Mattress/Table Pad is manufactured with a high-density, 25 mm polyurethane foam that ensures patient comfort by insulating from cold, hard, tabletop surfaces.

- 'Gor-Tex'-type fabric resists liquid penetration for easy stain removal.
- Six double-stitched strap handles and the slick pad cover facilitate patient positioning while on a table.
- Nylon hook eyes allow hanging storage to keep the pad clean and out of the way when not in use.
- Dimensions: 63.5 (w) x 205.7 cm (l)

Order Code	Product
056-358	Table Pad

Imaging Chair



The Imaging Chair puts the patient at ease, and provides alternative patient positioning for nuclear medicine procedures.

- The wide armrest allows the Imaging Chair to double as an injection chair.
- Dimensions: 64 (w)x 104 cm (h)
- Seat Dimensions: 43 (w) x 28 cm (deep)
- Height Adjustable: 48 (h) to 66 cm (h)
- β Backrest: 48 cm above seat top.
- Upholstery: 50 mm foam with gray vinyl cover.
- Finish: Black baked enamel.
- Wheels: Four locking swivel casters, 5 cm dia.
- Patient Capacity: 159 kg
- Weight: 34 kg

Order Code	Product
214-610	Imaging Chair

Atomlab 500®



The Atomlab® 500 can be used for a wide variety of nuclear medicine, PET and radioimmunotherapy applications, with proven performance for fast, accurate measurements.

- Low pressure ionisation chamber.
- Electrometer with extraordinary linearity.
- Auto-ranging colour touchscreen display.
- Pre-programmed for 98 most commonly used radionuclides; any 12 can be conveniently touch selected.
- Small footprint economises workspace.
- Upgradeable at any time to include a wipe test counter.

Order Code	Product
086-330	Atomlab 500®

Atomlab® Wipe Test Counter



The Atomlab® Wipe Test Counter is easy to use, easy to understand, fast and dependable.

- Expandable library of 33 commonly used isotopes.
- A touchscreen display utilising intuitive software eliminates the tedium of wipe testing.
- Detailed wipe reports including cpm and dpm.
- Wipe testing results stored.
- Wipes that exceed trigger levels are immediately recognised.
- Ability to help identify isotopes causing contamination.
- Upgradable at any time to a dose calibrator by adding an ionisation chamber.

Order Code	Product
086-331	Atomlab® Wipe Test Counter

Atomlab® 500Plus



The Atomlab 500Plus combines the industry gold standard Atomlab 500 Dose Calibrator and Wipe Test Counter, providing fast, accurate radionuclide activity measurements with performance that complies with the most stringent regulatory requirements.

- Pre-programmed for 98 most commonly used radionuclides; any 12 can be conveniently touch selected.
- Easy-to-use, touchscreen display with intuitive menus.
- Automatic range selection; up to 100 Curies of Tc-99m or 25 Curies of F-18.
- Remote shielded ionisation chamber.

Order Code	Product
086-500	Atomlab® 500Plus

PET Shielding Rings



The Dose Calibrator Shielding Ring offers an additional 57 mm of lead shielding around the remote chamber for working with 511 keV radionuclides, such as FDG F-18.

- Dimensions: 270 x 379 mm
- I.D.: 155 mm
- Lead Shielding: 57 mm
- Weight: 162.5 kg

Order Code	Product
086-338	PET Shielding Rings

Vial / Syringe Dipper



A rugged Vial / Syringe Dipper which holds 1 cc to 10 cc syringes or up to a 30 ml vial.

- Included with every Atomlab Dose Calibrator, the Vial / Syringe Dipper will also fit any well chamber with 63.5 x 254 mm interior dimension.
- The material used will not cause attenuation problems and is very resistant to breaking.

Order Code	Product
086-242	Vial / Syringe Dipper

Copper Syringe Dipper



Designed for use with I-123 and In-111, the Copper Dipper removes variation in readings caused by attenuation differences from different materials and thicknesses used in syringes and vials.

- Dimensions: 260 x 41 mm dia.
- Weight: .34 kg

Order Code	Product
086-243	Copper Syringe Dipper

Well Insert



The Well Insert is included with the purchase of any Atomlab Dose Calibrator. The durable, clear Plexiglas insert is designed to protect the chamber from contamination and can be easily removed for cleaning.

- The insert will fit any well chamber with 63.5 x 254 mm interior dimension.

Order Code	Product
086-241	Well Insert

Radiacwash™



Radiacwash™ is a concentrated solution designed to rapidly control radioactive contamination and remove radioactive particles from surfaces by a two-way action. First, it will sequester metallic ions which contaminate surfaces. Second, it lifts up and firmly suspends the contaminating particles, allowing contamination to be rinsed away with hard, soft or salt water.

- Formulated to decontaminate the widest possible range of contamination from radioisotopes and fission products.
- Does not affect surfaces as acids and reagents do.

Order Code	Product
005-100	Radiacwash™ (1.8 Ltr)

Radiacwash™ Spray Mist



Radiacwash™ Spray Mist combines the power and economy of Radiacwash™ into a special high pressure mist applicator.

- Penetrates around and under contaminants and lifts them off the surface into a solution which can be wiped up and disposed of easily.

Order Code	Product
005-400	Radiacwash™ Spray Mist (1 Ltr)

Radiacwash™ Decontaminating Wipes



Radiacwash™ Decontaminating Wipes are the most efficient and safest way to remove radiocontamination from hands and small objects. Simply dispense the Radiacwash pre-moistened wipes from the canister, scrub hands thoroughly and wash the contamination away with running water.

- Pre-moistened with Radiacwash™ solution.
- Ideal for hands and small objects.
- Each wipe measures 177 x 203 mm
- 75 wipes per canister.

Order Code	Product
005-300	Radiacwash™ Decontaminating Wipes

bartec

Bartec Technologies Ltd

Unit 14, Farnborough Business Centre, Eelmoor Road
Farnborough, Hampshire, GU14 7XA

E-mail: info@bartectechnologies.com

Tel: +44 (0)1276 581689

Fax: +44 (0)1276 20891

Web: www.bartectechnologies.com

Version 1.0 June 2018

A  **LabLogic** Group Company